



PATHFINDER

OKLAHOMA BICYCLE SOCIETY NEWSLETTER



www.oklahomabicyclesociety.com

JANUARY 2011



OBS DUES ARE DUE! (pg. 2)

DUES ARE DUE NOW. Send your check for \$20 for newsletter delivered by email, or \$40 if you wish to receive your newsletter by snail mail to: John Wente, 1805 Greenway Ct., Yukon, OK 73099 or pay online at: www.oklahomabicyclesociety.com/paydues.htm

OBS DUES ARE DUE! (pg. 2)

NEW OFFICERS! (pg. 10)

OBS CURRENT NEWS

- **Dues** (pg. 2)
- **General Meeting in January.**
Special guest, ANDREW RICE. (pg. 2)
- **Swap Meet** (pg. 2)
- **Holiday Rides** (pg. 2)

ROGER'S RAMBLINGS

ROGER WELCH, OBS PRESIDENT



Well, it's a New Year with a new President. My name is Roger Welch and this month I thought I would introduce myself.

As you can see from the photo, I'm a grandfather. My wife and I thought we would never have grandchildren and we were almost right. I got my first grandchild, the future

Lance Armstrong, and Medicare in the same month.

Up until age 16 I rode an old knee action Schwinn all over south Oklahoma City. Then in 1959 I got my first car and the bicycle went away. I'm not sure what happened to it but it disappeared. For the next 41 years, the only time I thought about a bicycle was when I saw one on the street blocking traffic.

That's not quite true. In 1999, while living in western NY state, my daughter and future son-in-law visited us and we rented bikes to ride along the old Erie Canal tow path. My job for the first three years when we lived in NY was to help build a manufacturing plant in Ireland so I was gone from home the majority of the time. When the project ended and I returned home full time, I must have been spending too much time in the

(continued on page 3)

INSIDE

Current News.....	2
Featured Articles	
Thank You and Rogers	3
Buck\$ 4 Bikes.....	4
Collision # 4	5
Christmas Party.....	6-7
Peddler's Market.....	8
Monthly Rides.....	9
Club Officers	11
Membership	10



Now's the time...

...To renew your OBS membership!

Dues are due **NOW**. Send your check for \$20 for newsletter delivered by email or \$40 if you wish to receive your newsletter by snail mail to:

John Wentz
1805 Greenway Ct
Yukon, OK 73099

OR pay on line at:

<http://www.oklahomabicyclesociety.com/paydues.htm>



Note: If you joined OBS on or after Sep 1, 2010, you are paid up through Dec 2011.



JANUARY OBS MEETING

Although the OBS normally does not have a meeting in January, this January Senator Andrew Rice will meet with us at 7:00 pm on January 4th.

Senator Rice has proposed legislation patterned after Colorado's laws pertaining to bicycling. There was quite a bit of e-mail activity earlier this year about this legislation. The bill will not be finalized on January 4th and Senator Rice is very interested to hear our input.

I think a copy of the present bill will be available to us before the January meeting.

Please plan to attend and have specific questions about his bill and suggestions that will benefit bicycling.

See you in January.
Roger

SWAP MEET - FEB. 8

Mark your calendars and gather your gear. The annual OBS swap meet will be:

Tuesday, February 8th.

7:00 PM

**Warr Acres Community Center,
4301 N. Ann Arbor.**

HOLIDAY RIDES

Check your email for details on the holiday rides. If you are interested in leading a Holiday Ride, please Contact Scott Freeman: 405.733.1016, jscottfree@yahoo.com

THANK YOU JIM & LAURIE ALLSHOUSE AND JOHN & DIANE LERMA

WRITTEN BY BILL ROBERTSON

Since you're reading this I'll assume you are regular readers of The Pathfinder. As such, I'm sure you've read that the Jim and Laurie Allshouse are retiring, at least for awhile, from their OBS volunteer functions. John and Diana Lerma are doing the same.



JIM & LAURIE ALLSHOUSE

Jim has spent many years as club historian, photographer, ride leader, electronic distributor of The Pathfinder, giver of input to OBS E-Boards

and other things I'm sure I'm forgetting. Laurie has done an EXCELLENT job of editing and organizing the Pathfinder. She published helpful and educational articles and kept those of us who write, on time and using good English. In addition, Laurie can always be counted on for Tabasco® sauce if a restaurant doesn't happen to have any. (ask her!)

John and Diane have done an excellent job over the years of working with the Allshouse's to distribute The Pathfinder via "snail mail." The past couple of years, they've made a few suggestions to lower the costs of our mailings. All of which have been accepted and are being put in practice by the board. John also wrote the database software that we use to keep track of rider entries on The Streak.

At the OBS Christmas party, they were presented with a trophy and a gift card for a good dinner to show our appreciation. On behalf of the OBS, I would like to take this opportunity to thank all four again for everything they've done to support the club. If you haven't already made it a point to thank them, personally do so the next time you ride with them.



JOHN & DIANE LERMA

ROGER'S RAMBLINGS continued...

house because Santa Claus brought me a bicycle that first Christmas. It was a GT Aggressor 1.0 mountain bike and I was hooked.

I rode mostly on the canal Tow Path and the local bike shop advised me to remove the mountain bike tires and put street-type tires on to reduce rolling resistance. Good move! Now any of you that know me know that I tend to have strong opinions. So for a couple of years I held road riders and their bikes with the flimsy looking skinny tires in great disdain. Then I met some folks that were training for the MS150 and rode with them. It soon became apparent that if I wanted to ride

with them, I would need some different gearing and a different bike. Still holding the skinny-tired bikes in disdain, I bought a hybrid. I thought it would be better because of the upright seating, wider tires and front suspension. What a mistake. I rode it for one season.

Then at the end of the 2005 riding season in New York, a bicycle box was delivered to our front porch and it contained a previously enjoyed Giant road bike as a thank you for our daughter's wedding. I couldn't ride it until the next spring but once I did, I was hooked for sure.

We retired and returned to Oklahoma

in mid-2006 and I joined OBS in 2007. From the Giant, I went to a Trek 2200 in 2007 and then to a Trek Madone 5.2 in 2009. I've become a bicycling enthusiast and logged over 6,500 miles in 2010.

I'm not an accomplished writer so I'll apologize in advance if the next 11 Pathfinders aren't up to par. However, I'm looking forward to a successful year for OBS and to joining all of you on numerous rides.

I'll see you down the trail.

Roger.

SALVATION ARMY BUCK\$ 4 BIKES

WRITTEN BY LAURIE ALLSHOUSE

OBS members came together to assemble children's bikes for the annual Salvation Army Buck\$ 4 Bikes one weekend in early December. OBS member, Kay Harper, had spearheaded donations for helmets to go with each of the over 570 bikes that were given to local needy children. Not being a bike mechanic, I was skeptical about how much help I could possibly be. Opening boxes, unwrapping unassembled parts, running finished bikes to the next station and getting rid of trash kept me running all morning. It was great fun and I look forward to participating next year.



"Where's Jim?" ... Find Jim Allshouse.

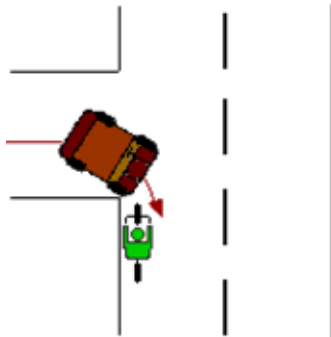


Images provided by Jim Allshouse and Blu Phillips

Collision Type #4: The Wrong-Way Wreck

SUBMITTED BY JOHN WENTE

This is the fourth in a series of 10 articles about avoiding collisions between cyclists and motor vehicles. These articles are adapted from Bicycle Safety (www.BicycleSafety.com) and used by permission of Bicycle Safety.



You're riding the wrong way (against traffic, on the left-hand side of the street). A car makes a right turn from a side street, driveway, or parking lot, right into you. They didn't see you because they were looking for traffic

only on their left, not on their right. They had no reason to expect that someone would be coming at them from the wrong direction.

Even worse, you could be hit by a car on the same road coming at you from straight ahead of you. They had less time to see you and take evasive action because they're approaching you faster than normal (because you're going towards them rather than away from them). And if they hit you, it's going to be much more forceful impact, for the same reason. (Both your and their velocities are combined.)

HOW TO AVOID THIS COLLISION:

Don't ride against traffic. Ride with traffic, in the same direction. Riding against traffic may seem like a good idea because you can see the cars that are passing you, but it's not.

Here's why:

- Cars which pull out of driveways, parking lots, and cross streets (ahead of you and to the left), which are making a right onto your street, aren't expecting traffic to be coming at them from the wrong way. They won't see you, and they'll plow right into you.
- How the heck are you going to make a right turn?
- Cars will approach you at a much higher relative speed. If you're going 15mph, then a car passing you from behind doing 35 approaches you at a speed of only 20 (35-15). But if you're on the wrong side of the road, then the car approaches you at 50 (35+15), which is more than twice as fast! Since they're approaching you faster, both you and the driver have

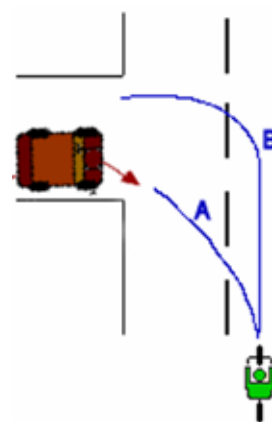
lots less time to react. And if a collision does occur, it's going to be ten times worse.

- Riding the wrong way is illegal and you can get ticketed for it.

One study showed that riding the wrong way was three times as dangerous as riding the right way, and for kids, the risk is seven times greater. (<http://www.bicyclinglife.com/Library/riskfactors.htm>)

Nearly one-fourth of crashes involve cyclists riding the wrong way. Some readers have challenged this, saying if 25% of crashes are from going the wrong way, then riding the right way is more dangerous because it accounts for 75% of crashes. That thinking is wrong. First off, only 8% of cyclists ride the wrong way, yet nearly 25% of them get hit -- meaning wrong-way cyclists really are three times more likely to get hit than those who ride the proper way. Second, the problem with wrong-way biking is that it promotes crashes, while right-way biking does not. For example, cyclists running stop signs or red lights is 17% of their crashes. But do we therefore conclude that not running signals causes 83% of crashes?! (Hint: No.)

CUTTING THE CORNER



If a cyclist "cuts the corner" as in path A in the picture here, this is as bad as riding wrong way. The cyclist IS in the wrong lane when making the turn. The approaching car, whether making a turn as shown in the picture or proceeding straight, will not see the cyclist because he is not where traffic is supposed to be.

The cyclists should follow the path designated as B in the drawing. Incidentally, the same holds true for motorists making a left turn. Cutting the corner is almost as dangerous when driving a motor vehicle as when driving a bicycle.

CHRISTMAS HOE-DOWN, YA'LL!

A BIG THANK YOU TO OUR PARTY PLANNER'S JAN, TRUDY AND MARY! (Pictured below)



2010 OBS CHRISTMAS HOE DOWN IN THE MAKING

WRITTEN BY MARY MCDANIEL, PARTY PLANNER

The three amigos got started with their planning a little later than normal for 2010, but due to our past experience in putting on this shindig, we had our previous spreadsheet of items to bring which really helped a lot. Also, using the same facility again always helps for knowing what we have to work with for decorating. So, a ride/planning party was hatched for December 4th to leave from Mary's house, do a 28-mile loop around Draper Lake then back for lunch and planning. My cohorts, Jan Hamlin and Trudy Morgan showed up on the somewhat chilly, albeit sunny, Saturday ready for the ride.

Our theme had actually been decided upon several months earlier, so just the details on decorating, etc, needed to be worked out. Emails had been flying for over a week on ideas. Google made getting ideas so easy, but of course working within a budget and timeline made some of the decorating ideas out of our reach. As Trudy and Jan arrived, we were so excited to show each other the things we'd already gathered for decorating and share additional ideas, that we could barely get out the door to start the ride!

On that very blustery Saturday morning the winds were 15 - 20 mph out of the north. Our route begin heading south, which was great, but we quickly decided that we didn't like the idea of doing the loop and having to end the ride going back into the

headwind. Jan made a quick call to John back at their house in Norman to see if he'd be willing to give us a ride back to Mary's house if we just did a tailwind ride to Norman. Despite having other things to do, he agreed (we promised to feed him lunch if he did ;-). As we rode, Trudy pointed out some really cool looking weeds that we could use for table decorations. We talked and chatted about ideas the whole ride—I never realized how riding can get the creative juices flowing before!.

We arrived at Jan's, loaded the bikes and had John stop along the road on the way back so we could pick the weeds. I'm sure we were quite a sight with our biking gear on out on the side of the road picking weeds! Back to Mary's for lunch and we decided on all the party details.

Fast forward to the day of the party. Jan, John, Trudy and I arrived at the CE Page Bldg at noon to start our preparatory activities that would end with a Hoe Down to remember. Soon after noon, our good friends Jim and Laurie Allshouse arrived and offered their help. From there it was non-stop activities until 11pm that night. Everyone I talked to said they had a blast. All in all, I was happy with the way everything turned out. I still don't understand why we didn't have any Dolly's though??

Mary's favorite part of the experience: Planning ride



BEST REAR VIEW AWARD • **Stacy McKinney!**
Congratulations!



Just got home and my wife and I talked about the evening all the way home. Absolutely the best time we've had since last year's OBS Christmas party. Thanks to Mary, Jan and Trudy for putting it all together. And thanks to all of you who came and made it such a great event. And last, thanks to all who stopped by to thank me for serving the OBS. It's been a pleasure and an honor. Merry Christmas to all! -Bill



Thank you to everyone who came out to the OBS Christmas Party. You guys are what make it sooo fun! We had a record turnout this year. Our DJ was awesome, as always! I want to thank my fellow party planners Jan and Trudy for all of their hard work. They are absolutely the greatest to work with!

Images provided by Jim and Laurie Allshouse, Mary McDaniel and Blu Phillips

I also want to thank the following folks who came out the day of the party to help set up, run for things, and/or stay around afterward to help clean up: John Hamlin, Jim & Laurie Allshouse, Wilton & Janice Berry, Bruce & Deb Cox, & Dale Koehn. I know there were others that I probably didn't see helping to clean up, so to you thank you SOOO much. We actually got out of there at a reasonable time! Again, thank you & I hope you all have a very Merry Christmas! -Mary

PEDDLER'S MARKET

Classified ads are FREE to OBS members, \$15 to others. Checks should be payable to Oklahoma Bicycle Society. Ads will run for three months. Please send your ad by the 10th of each month to: E-mail: obs.editor@gmail.com

FOR SALE

Rans VRex recumbent bike,
in good condition,
\$750
405-373-2631, ask for Gary

FOR SALE

Manufactured May 2007
Custom Titanium Santana Triplet
Powder coated 4 color fade with ghost flames and crushed mother of pearl paint
Shimano Sweet 16 Wheels (earlier stronger set)
carbon fiber- fork, stoker stems (adjustable), handle bars,
seat posts (one suspension seat post), bottle cages
10" disk brake and two caliper brakes
24 karat gold logo and emblem
\$19,400.00 new will sell for \$12,000.00
See at Bike One 4205 NW 23rd, OKC
(picture below)

MORE CHRISTMAS PARTY PIX!



OBS CLUB RIDES

All safe riders are welcome to join an OBS ride. We do suggest that your first ride should be the DONUT RIDE, if you are new to cycling or are trying to get in shape after being sedentary. It is a very pleasant experience to be able to ride with others who ride the same approximate speed. We try to give you an accurate description of the various rides, but the pace of a ride is actually dictated by those who show up at any particular time. You will have more fun if you pick a ride that suits your ability. Ride leaders have been asked to try to keep all riders together for the first 3 miles of a ride. Rain or freezing temperatures will usually cancel a ride. If unsure, call the ride leader listed.

PRE - DONUT / YEAR ROUND Saturday - 7:20 a.m.

This is that get up and get started ride. Start location is What-A-Burger rear parking lot at the corner of 36th & MacArthur. Ride goes around Lake Overholser and then to Will Rogers Park for the Donut Ride. The ride distance is 18 miles and a regrouping point is at the rowing club building on Overholser Drive. This is a NO DROP ride. Ride Leader: Open



**Life is like riding a bicycle.
You don't fall off unless you
plan to stop peddling.**

~Claude Pepper

DONUT RIDE / YEAR ROUND Saturday 9:04 AM

Meet at the Will Rogers Park Tennis Center Parking lot, located east from N. Portland Av. on Pat Murphy Drive, which is about 2 blocks south of NW 36th St. Ride to Brown's Bakery at NW 10th St. and Walker Av. Eleven mile round trip at the pace of the slowest rider. Ride is suitable for new riders, family groups, and seasoned riders who want to socialize. The leader leads from the rear, so this is a NO DROP ride. Ride Leader: Fred Kamp 942-1108 fredkamp@sbcglobal.net

FRANCIS TUTTLE RIDE / YEAR ROUND - Saturday 9:00 am Oct 17 thru April 10 8:00 am April 17 thru Oct 9

This is a training ride at an intermediate to fast pace for 35 to 50 miles. (18 - 20 mph) Meet in the southeast parking lot of Francis Tuttle Vo-Tec, at NW 122nd and Rockwell (1/4 mile north of 122nd). Flat to rolling terrain, generally to Edmond, Yukon, Okarche or El Reno. Stop for coffee and return. Ride coordinator: Mike Bourland 659-0539

WEEKDAY LEISURE RIDE

Mon, Tue, Thu, and Fri • 9:00 a.m.

Meets at the Overholser Bait House (Ranger Station) Ride circles Lake Overholser with breakfast at the Buffalo Grill afterwards. Ride for fun and exercise. No monitoring of heart rates allowed. Fred Kamp 942-1108

MOORE/NORMAN BREAKFAST RIDE - Saturday

**May thru Sep 8:00 AM
Oct thru Apr 8:30 AM.**

Starts at the Moore Public Library, 225 S. Howard Ave. No-Drop policy. Suitable for most riders, including beginners. 20-30 miles at pace of slowest rider. Ed Hatch 321-1823. draptor@cox.net

FLOATING CRAPGAME RIDE / WINTER RIDE

Saturday 9:00 am Nov. through March

Meet at different locations each Saturday of the month. Rides are 25 to 35 miles and usually stop midway for brunch. This is the next step up for riders wanting more than the donut ride pace. Emphasis is more on having fun and socializing, thus this is a NO DROP ride with several regrouping points. Rolling hills at 12 to 15 mph

1st Saturday: SW 89 and Walker, strip mall on SE corner. John Wente 354-2301, jwente49@cox.net

2nd Saturday: Old Conrad - Marr, 1 block S of Main on 4th, Yukon. Ride leader: John Wente 354-2301, jwente49@cox.net

3rd Saturday: Walnut Creek, NW corner of 122nd & Rockwell. Contact John Wente, if you would like to lead this ride. jwente49@cox.net

4th Saturday: One Benham Place, Britton and Broadway Ext. Ride Leader: Roger Welch 478-8551, rdwelch@gmail.com

5th Saturday: Somewhere different and a special ride. Contact Ride Leader: John Wente 354-2301 jwente49@cox.net

2011 OBS CLUB OFFICERS

President	Roger Welch	405.748.8551 rdwelch@gmail.com
Vice President	OPEN	Contact Roger at 748.8551
Past President	Bill Robertson	405.720.8430 soonerbent@soonerlover.com
Secretary	OPEN	Contact Roger at 748.8551
Treasurer	Alice Patillo	405.359.7454 alice@glpcommunications.com

OTHER OBS APPOINTMENTS

Activities/Events	Scott Freeman	405.733.1016 jscottfree@yahoo.com
Membership Chairman	John Wentte	405.354.2301 1805 Greenway Ct. Yukon, OK 73099 jwente49@cox.net
Historian	OPEN	
OBS Streak	OPEN	
Grand Tour Director	OPEN	

PATHFINDER STAFF

Editor	Blu Phillips	405.640.6137 2309 N. Willow Ave Bethany, OK 73008 obs.editor@gmail.com
Circulation	Joseph Thiessen	405.863.6985 obs.editor@gmail.com
Photographer	Jim Allshouse	jim0740@cox.net



**THANK YOU
TO THE 2010
OFFICERS!
YOU DID A
GREAT JOB
AND WE
APPRECIATE
ALL OF YOUR
HARD WORK!**

Bill Robertson
Roger Welch
Christine Leonard
Alice Patillo
Scott Freeman
John Wentte
Jim Allshouse
Laurie Allshouse
John & Diana Lerma

MEMBERSHIP

PLEASE WELCOME THE NEW OBS MEMBERS

Shannon Clark

Machelle Johnson

Sherry Keahey

Kevin King

Michael McGrath

Paul Thielker

Mike Vaughan

Membership in the Oklahoma Bicycle Society (OBS) is \$20 annually. All persons with an interest in bicycling are invited and encouraged to join. Membership entitles one to the fun and fellowship of other cyclists and a year's issues of the Pathfinder, the club newsletter. Those joining after September 1st are paid through the following year. For membership information, contact John Wente, Membership Chairman. The Pathfinder is sent by email free of charge (regular mail incurs an added fee) to all members and other organizations, as selected by the Board of Directors. All persons are encouraged to submit newsletter material that is related to cycling, including, but not limited to upcoming or past events, bicycle maintenance, riding skills, racing, touring, recreation and safety. All letters and material will be considered for publication, yet the editorial staff retains the right to exclude any material they feel is not in the best interest of the OBS or its membership. Materials must be received by the 10th of the month preceding publication date.

Send any and all material to Blu and Joseph at obs.editor@gmail.com

RELEASE

In consideration of the acceptance of my application for membership in the Oklahoma Bicycle Society ("OBS"), I hereby agree to make the following contractual representations and agreements. I fully realize the dangers of participation in the sport of bicycling, bicycle rides, and bicycle related functions, and fully assume the risks associated with such participation, including, but not limited to the following: the danger of collision with pedestrians, other vehicles including automobiles and trucks, and other riders, the danger associated with equipment failure, inadequate safety equipment, the dangers associated with weather conditions, and the possibility of serious physical and/or mental injuries associated with participation in said bicycling activities. I hereby waive, release and discharge for myself, my heirs, executors, assigns, and successors in interest (hereafter, collectively "successors") any and all rights and claims which I have, or which may hereafter accrue to me, against the OBS or any officer or member thereof for any damages which may be sustained by me directly or indirectly in connection with or arising out of my participation in or association with activities sponsored by the OBS or any officer or member thereof. I agree for myself and successors that the above representations are contractually binding, and are not mere recitals, and that should I or my successors assert any claim in connection with this agreement, I or my successors shall be liable for the expenses including attorney fees incurred by the OBS or any officer or member thereof unless the OBS or any officer or member thereof is finally adjudged liable on such claim for willful and wanton negligence. This agreement may not be modified orally, and a waiver of any provision shall not be construed as a modification of any other provision herein or as consent to any other provision herein or as consent to any subsequent waiver or modification.

OBS MEMBERSHIP REGISTRATION FORM

Please print legibly and fill in all the blanks. All members of a household are eligible to participate in club functions on a single-family membership.

NAME _____

ADDRESS _____
Omit from directory

CITY _____

STATE _____ ZIP _____ PHONE _____
Omit from directory

E-Mail _____

NOTICE: This application and release form is a contract with legal consequences. Read it carefully before signing. Signature of adult parent or guardian is required if applicant is under age of 18

SIGNATURE OF APPLICANT DATE

PARENT/GUARDIAN OF A MINOR: I, as parent or guardian of the below named minor, hereby give my consent to my child to become a member of the OBS and further agree, individually and on behalf of my child to the terms as stated.

SIGNATURE OF PARENT OR GUARDIAN DATE

ANNUAL DUES \$20 with electronic newsletter or \$40 if paper newsletter mailed
Please mail Registration and Check or Money order to:
John Wente, 1805 Greenway Court, Yukon, OK 73099



Presorted Standard
U.S. Postage PAID
Oklahoma City, OK
Permit No. 1481

1805 Greenway Court, Yukon, OK 73099

The Oklahoma Bicycle Society is dedicated to the promotion of bicycle safety in all its forms and furtherance of the sport of bicycling by protecting and defending the rights of bicyclists.

For the latest news on club activities and upcoming rides, visit the OBS web page:
www.oklahomabicyclesociety.com

CHANGE OF ADDRESS

(IF YOU ARE RECEIVING THE PATHFINDER BY REGULAR MAIL)

Don't miss your Pathfinder— Let us know when you move. The Pathfinder is sent to you each month using bulk mail. As such, it cannot be forwarded to a new address. You may send your new address to the membership officer listed on pg 10. If you go on-line to make your change, go to "Members Area". You will find a place to click and change your address.

RETURN SERVICE REQUESTED

